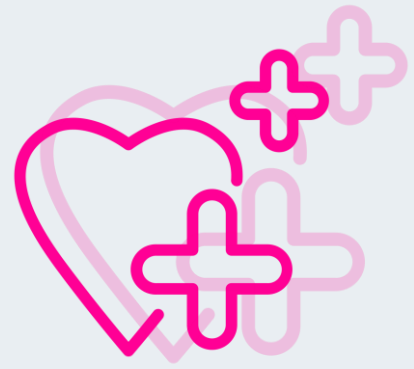


Improving Detection and Management of Atrial Fibrillation in Black, Asian and other Ethnic Groups in Areas of Deprivation: *Key Findings from our Evaluation*



Healthwatch Hertfordshire was commissioned by the Hertfordshire and West Essex Integrated Care System (ICS) to complete an independent evaluation of their Innovation and Healthcare Inequalities Programme (InHIP).

This project looked to improve the detection and management of Atrial Fibrillation*, with a focus on engaging with ethnically diverse communities, given that Cardiovascular Disease (CVD) Prevent Data shows that ethnically diverse groups are less likely to be appropriately managed.

This summary outlines the key findings from the evaluation which has uncovered examples of good practice, as well as learnings, challenges and recommendations to be taken forward and built upon by partners within the ICS.



Partnerships and Collaboration

A central theme found through this evaluation was the importance and value of partnerships and collaboration. Having a clear scope and remit, a range of partners involved provided different skills and expertise. Frequent communication between partners was a key driver for the success of the project and this work has created a strong base for future partnership working to continue.

Enablers for Community Engagement



Partners were successful in conducting community engagement and were inclusive in their approach by reconstructing messages to account for cultural contexts and providing promotional materials in a range of languages. However, learnings to take forward include:

- Stronger promotion and advertisement of events, utilising community settings to capture a wider audience.
- Providing posters in a range of accessible formats including Easy Read, British Sign Language (BSL) as well as other languages.
- Adopting a co-production approach, actively involving community leaders and members of the public in the design and delivery of the project.
- Visiting community groups to encourage attendance and build trust.

***Atrial Fibrillation is a heart condition that causes an irregular and often very rapid heart rhythm.**

The Value of Community Outreach



The community outreach and events were recognised as key drivers for the success of the project. The events not only detected cases of cardiovascular disease but also provided information and education about cardiovascular disease, navigating the NHS, and healthy lifestyle advice to the community. However, learnings to take forward include:

- Providing an interpreter or translator at events to enable participation from people whose first language isn't English.
- Providing creative and interactive events to encourage attendance.
- Adopting a holistic approach, focusing on health, wellbeing and lifestyle, rather than a single issue or condition.
- Ensuring events are physically accessible

Resource and Capacity



Resource and capacity was identified as a key challenge for the project. Lack of staff capacity and pressures within primary care limited how much the project could achieve. Partners have said that they need future projects whenever possible to be given enough time, resource and capacity to successfully meet their objectives.

The Value of Technology



The inability to use the KardiaMobile device was a significant barrier cited by partners and meant having to change the focus of the project. However, the project enabled new ways of working, including the use of system searches within primary care to identify and invite patients potentially at risk, and this showed the importance of being able to share patient data between partners to ensure referrals, results and treatments are taken forward. Partners felt these are valuable learnings to take forward and be further resourced, developed and advanced.

Summary and Next Steps

The Hertfordshire and West Essex ICS InHIP programme has reinforced the value of partnership working and adopting a multi-agency approach to addressing health inequalities, as well as the importance of conducting community engagement and outreach, particularly when considering health prevention.

"I'd like to thank Healthwatch Hertfordshire for this fantastic evaluation. These findings will help us tackle cardiovascular disease in at risk communities and engage with diverse communities regarding health issues that affect them. In partnership with local stakeholders, we'll continue to increase awareness about working together with partners and communities to achieve better outcomes for all."

Kevin Hallahan, Health Inequalities Lead, Hertfordshire & West Essex Integrated Care Board (ICB)